



SD BIOLINE Salmonella Typhi IgG/IgM Fast

Salmonella typhi diagnosis is now faster than ever!

SD BIOLINE Salmonella typhi IgG/IgM Fast test provides a simple, rapid method for the differential diagnosis of IgG and IgM antibodies to *Salmonella typhi*. This easy-to-use format and rapid results allow point-of-care testing and it can provide information to assist with treatment and patient management decisions.

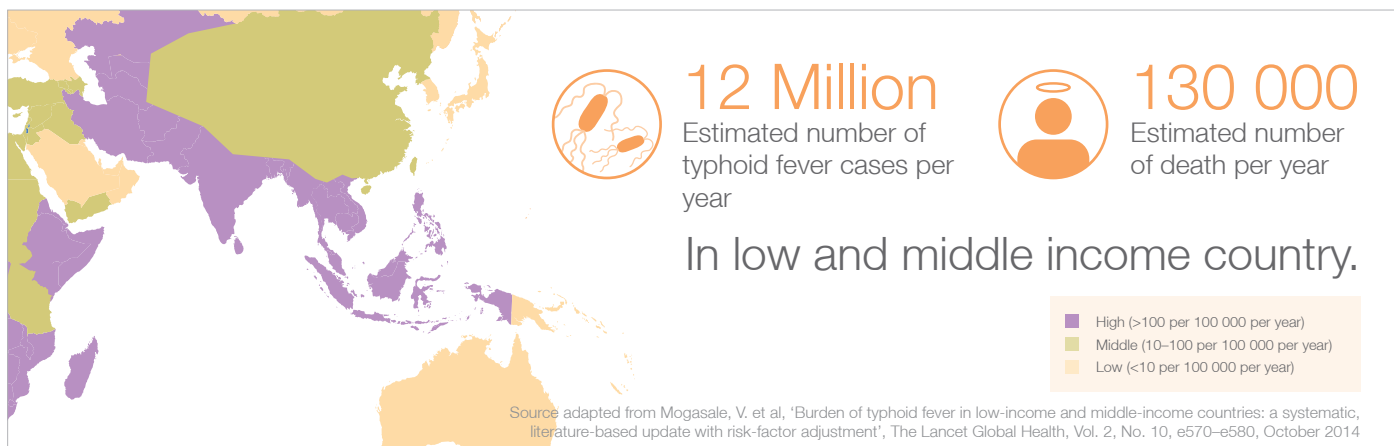
Features of the SD BIOLINE Salmonella typhi IgG/IgM Fast rapid test

- Test result : 15~30mins.
- Differential antibody detection : IgG and IgM antibodies
- Minimum sample volume : 1 μ l
- Easy storage : 2~30°C
- Easy Interpretation : 3-lines (IgG, IgM, Control)



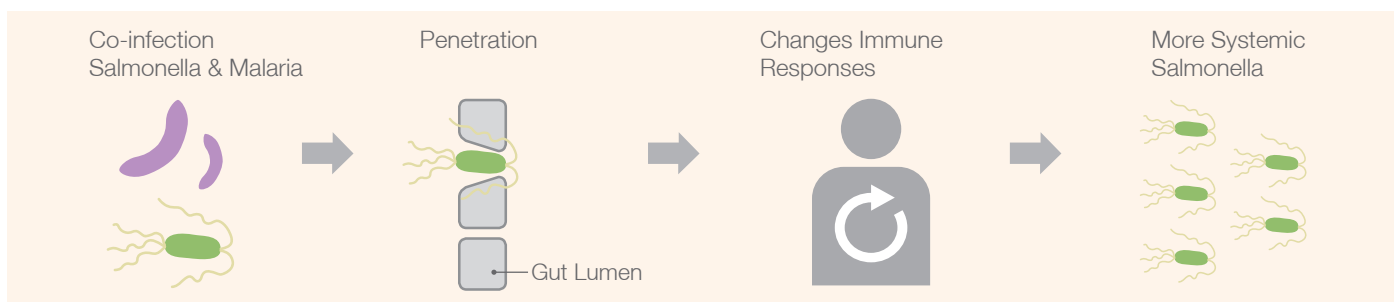
SD BIOLINE Salmonella Typhi IgG/IgM Fast

Geographic occurrence of typhoid fever



Emerging concern on malaria and salmonella co-infection that may:

- Mimick symptom of malaria infection
- Increase systemic burden to body
- Contribute to increased morbidity and mortality of patients infected with *Salmonella typhi*



Adapted from Mooney, J. et al, "The mucosal inflammatory response to non-typhoidal Salmonella in the intestine is blunted by IL-10 during concurrent malaria parasite infection", Mucosal Immunology, 2014 November ; 7(6): 1302–1311.

Reliable intervention to diagnose *salmonella typhi* infection!

SD BIOLINE Salmonella typhi IgG/IgM Fast rapid test (Cat.# 15FK12) is rapid and qualitative serologic test for the detection of IgG and IgM antibodies against *Salmonella typhi* in human serum, plasma and whole blood.

- Test result: 15~30 minutes
- Storage: 2~30°C
- Shelf life: 24 months from the date of manufacturing
- Performance

Blood culture	SD BIOLINE Salmonella typhi IgG/IgM Fast					
	IgG		IgM		IgG/IgM	
	+	-	+	-	+	-
Positive	24	13	35	2	37	0
Negative	9	68	6	71	11	66
Sensitivity (95% CI)	64.9% (48.8–78.2%)		94.6% (82.3–98.5%)		100% (90.6–100%)	
Specificity (95% CI)	88.3% (79.3–93.7%)		92.2% (84–96.4%)		85.7% (76.2–91.8%)	
PPV (%)	72.7%		85.4%		77.1%	
NPV (%)	84.0%		97.3%		100.0%	

Semi-quantitative serum assay		Widal TH (IgG)		Widal TD (IgM)	
+	-	+	-	+	-
36	1	30	7	36	1
12	65	13	64	22	55
97.3% (86.2–99.5%)		81.1% (65.8–90.5%)		97.3% (86.2–99.5%)	
84.4% (74.7–90.9%)		83.1% (73.2–89.9%)		71.4% (60.5–80.3%)	
75.0%		69.8%		62.1%	
98.5%		90.1%		98.2%	

Source: Product Package Insert

Order Information

SD BIOLINE Salmonella typhi IgG/IgM Fast
 Order No. 15FK12 (25Test Kit)
 Sample Type : Serum/Plasma/Whole Blood
 Type : Strip

Please contact your local Abbott representative.